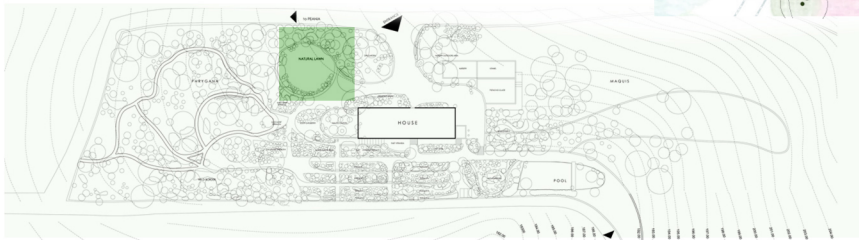
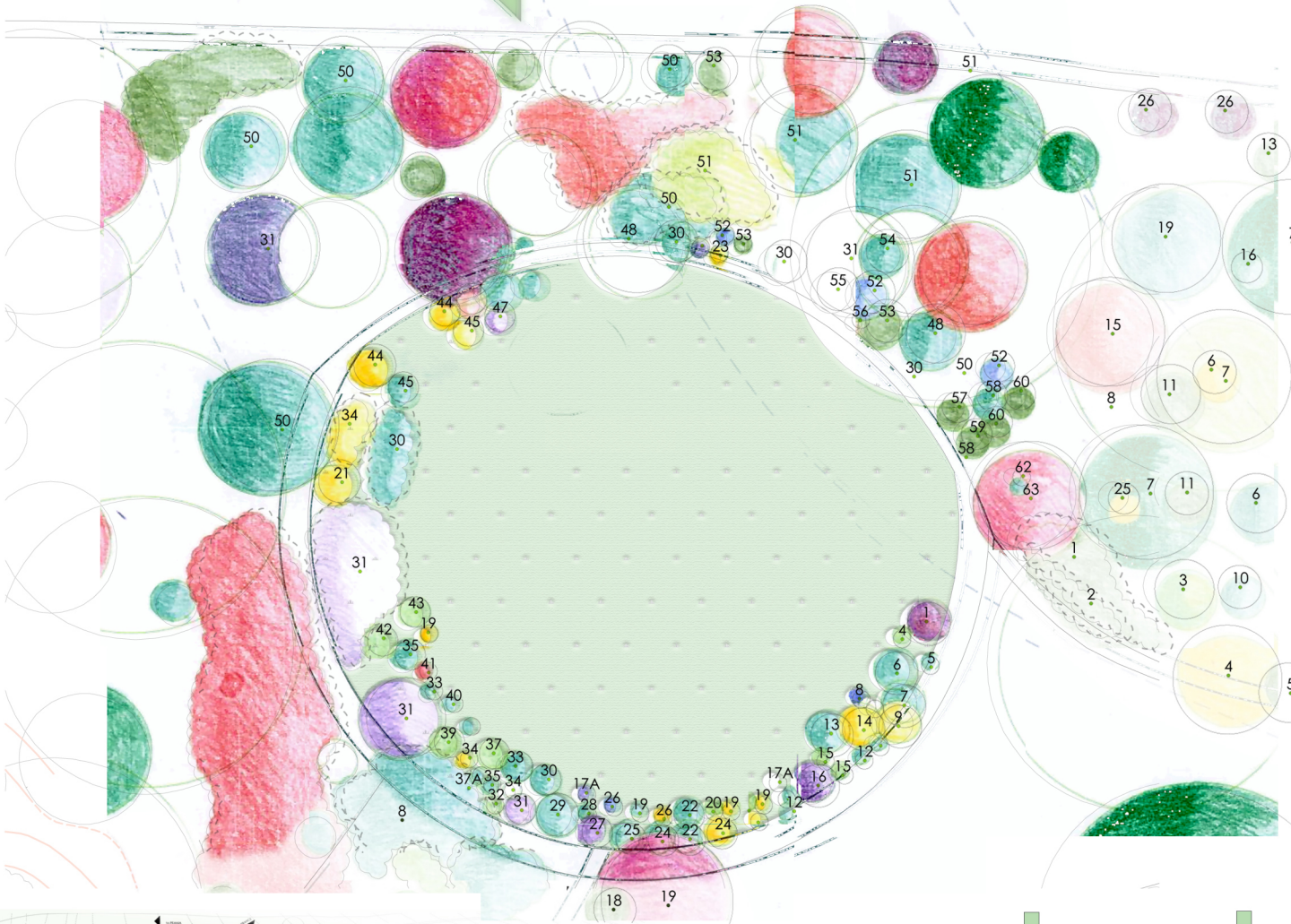


to PEANIA



# natural lawn

- |  |                                      |
|--|--------------------------------------|
| 1 <i>Drosanthemum</i> sp.                      | 31 <i>Rosmarinus officinalis</i>     |
| 2 <i>Alyogyne huegelii</i> x <i>hakeifolia</i> | 32 <i>Marrubium vulgare</i>          |
| 3 <i>Freesia leichtlinii</i>                   | 33 <i>Santolina chamaecyparissus</i> |
| 4 <i>Achillea millefolium</i>                  | 34 <i>Cneorum tricoccon</i>          |
| 5 <i>Rhodanthemum hosmaritense</i>             | 35 <i>Helichrysum orientalis</i>     |
| 6 <i>Cistus</i> x <i>skanbergii</i>            | 36 <i>Malvastrum lateritium</i>      |
| 7 <i>Scabiosa/Lomelosia cretica</i>            | 37 <i>Salvia argentea</i>            |
| 8 <i>Scilla peruviana</i>                      | 37A <i>Centaurea cineraria</i>       |
| 9 <i>Santolina viridis</i>                     | 39 <i>Salvia</i> sp.                 |
| 11 <i>Teucrium polium</i>                      | 40 <i>Helichrysum petiolare</i>      |
| 12 <i>Dianthus</i> sp.                         | 41 <i>Sparaxis tricolor</i>          |
| 13 <i>Cotyledon orbiculata</i>                 | 42 <i>Salvia leucantha</i>           |
| 14 <i>Thevetia peruviana</i>                   | 43 <i>Calamintha sylvatica</i>       |
| 15 <i>Tradescantia sillamontana</i>            | 44 <i>Artemisia arborescens</i>      |
| 16 <i>Teucrium fruticosum</i> 'Agadir'         | 45 <i>Euphorbia ceratocarpa</i>      |
| 17 <i>Gladiolus tristis</i>                    | 46 <i>Pelargonium</i>                |
| 17A <i>Nepeta faassenii</i>                    | 47 <i>Lomelosia cretica</i>          |
| 18 <i>Coleonema album</i>                      | 48 <i>Ptilostemon chamaepeuce</i>    |
| 19 <i>Senecio bicolor</i>                      | 49 <i>Eriosephalus africanus</i>     |
| 20 <i>Catananche caerulea</i>                  | 51 <i>Euphorbia dendroides</i>       |
| 21 <i>Phlomis fruticosa</i>                    | 52 <i>Iris germanica</i>             |
| 22 <i>Lavandula dentata</i>                    | 53 <i>Aloe</i> sp.                   |
| 23 <i>Aurinia saxatilis</i>                    | 54 <i>Centaurothamnus maximus</i>    |
| 24 <i>Cistus monspeliensis</i>                 | 55 <i>Amaryllis belladonna</i>       |
| 25 <i>Phlomis russeliana</i>                   | 56 <i>Ferraria crispa</i>            |
| 26 <i>Salvia chamaedryoides</i>                | 57 <i>Echinopsis oxygona</i>         |
| 27 <i>Cistus cretica</i>                       | 58 <i>Sedum ochroleucum</i>          |
| 28 <i>Teucrium fruticosum</i> 'Azureum'        | 59 <i>Cactus</i>                     |
| 29 <i>Anthyllis barba-jovis</i>                | 60 <i>Echinocactus grusonii</i>      |
| 30 <i>Cotyledon orbiculata</i>                 | 61 <i>Crassula ovata</i>             |
|  | 62 <i>Rhamnus alaternus</i>          |
|  | 63 <i>Cercis siliquastrum</i>        |

\*coloring of map indicating spring flowering colors

project	
<b>SPAROZA GARDEN</b> OF THE MEDITERRANEAN GARDEN SOCIETY	
<b>GOULANDRIS NATURAL HISTORY MUSEUM</b>	
PROJECT The existing landscape	
<b>LANDSCAPE ARCHITECTURE PROJECT</b>	
DESIGN: EXISTING PLANTINGS	
<b>NATURAL LAWN</b>	
	DESIGN NO
	SCALE
	<b>1:50</b>
<b>CREDITS</b> The current design was created as a volunteer work by Horticulturist-Landscape Architect and member of the MGS Dr. Lena Athanasiadou with the aid of landscape architecture students AUTH Alexandros Mpantogias & Antonia Psaropoulou based on the plant inventory created by MGS members Sally Razelou and Marie Ruffier - Monet and hand made plans created by Ms Gennifer Gay, in 2001.	
<small>Reference: Gay J. 2001 A Year at Sparoza, The Garden of the Headquarters of the MGS near Athens, Greece. Report for the RHS Bursaries Committee in Acknowledgement of Financial Assistance by the Coke Trust</small>	
Sparoza, Peania, Athens	
OCTOBER 2020	